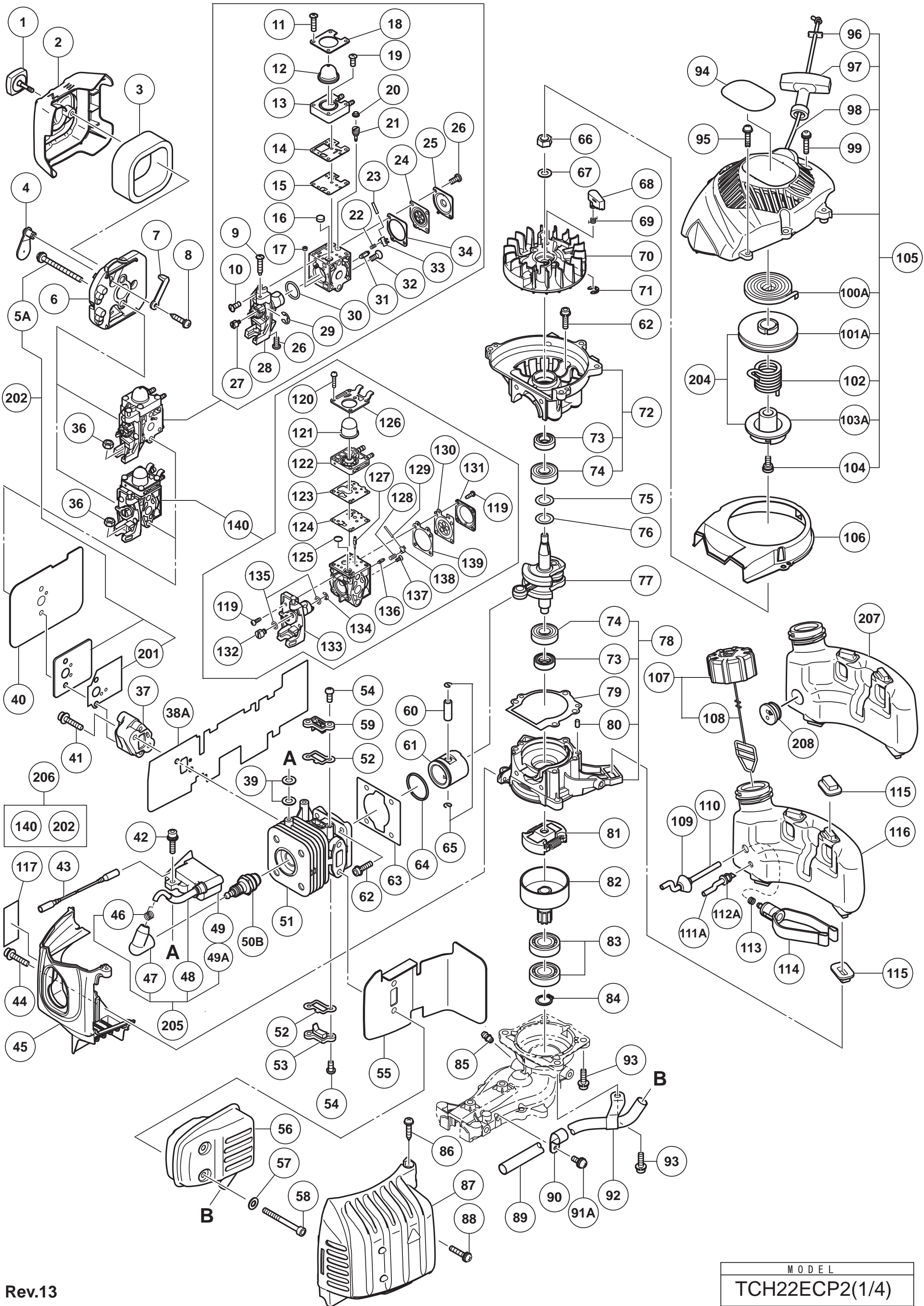


Tanaka

TCH 22ECP2 (62,66,78)

Serial No.

2016 -

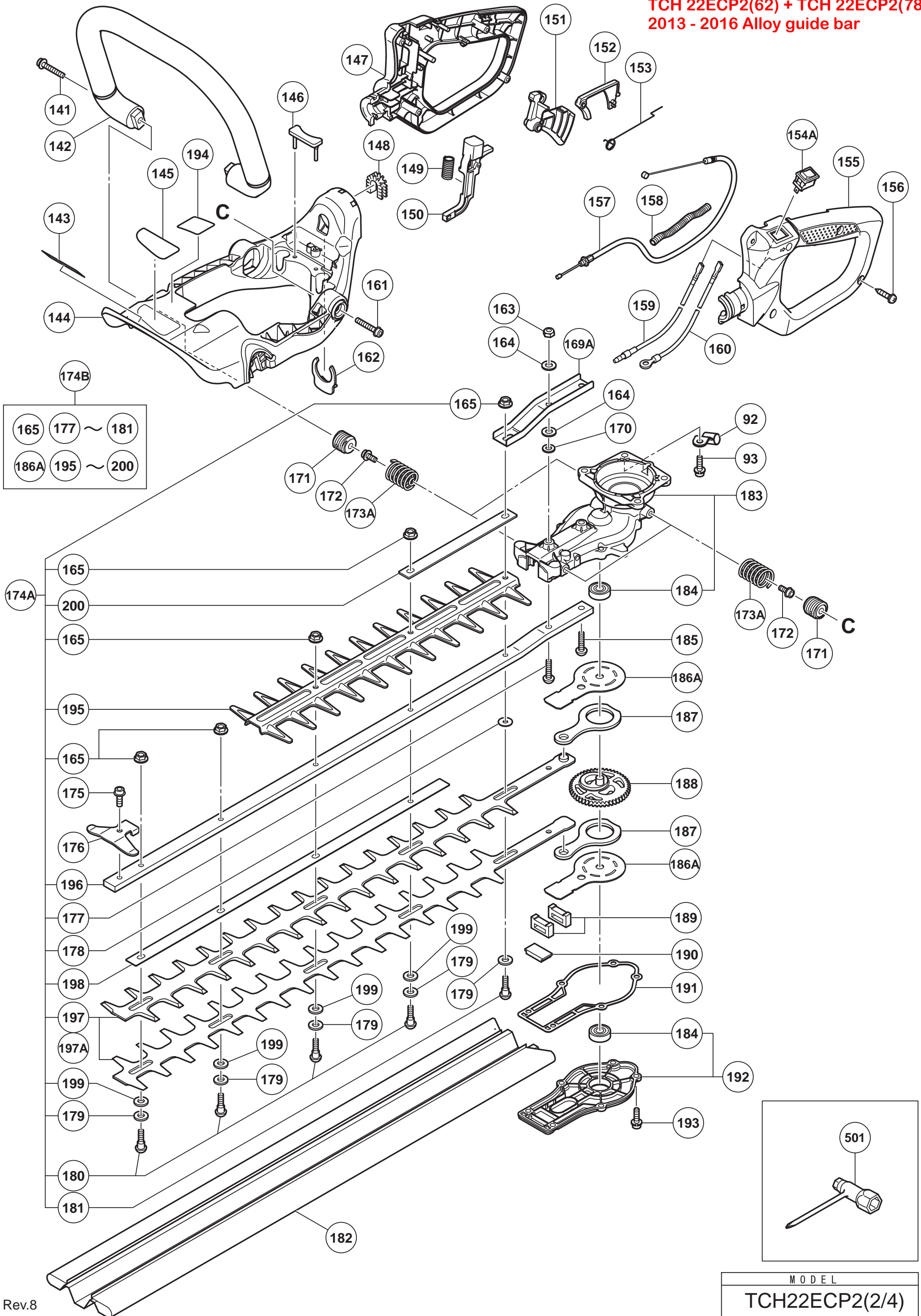


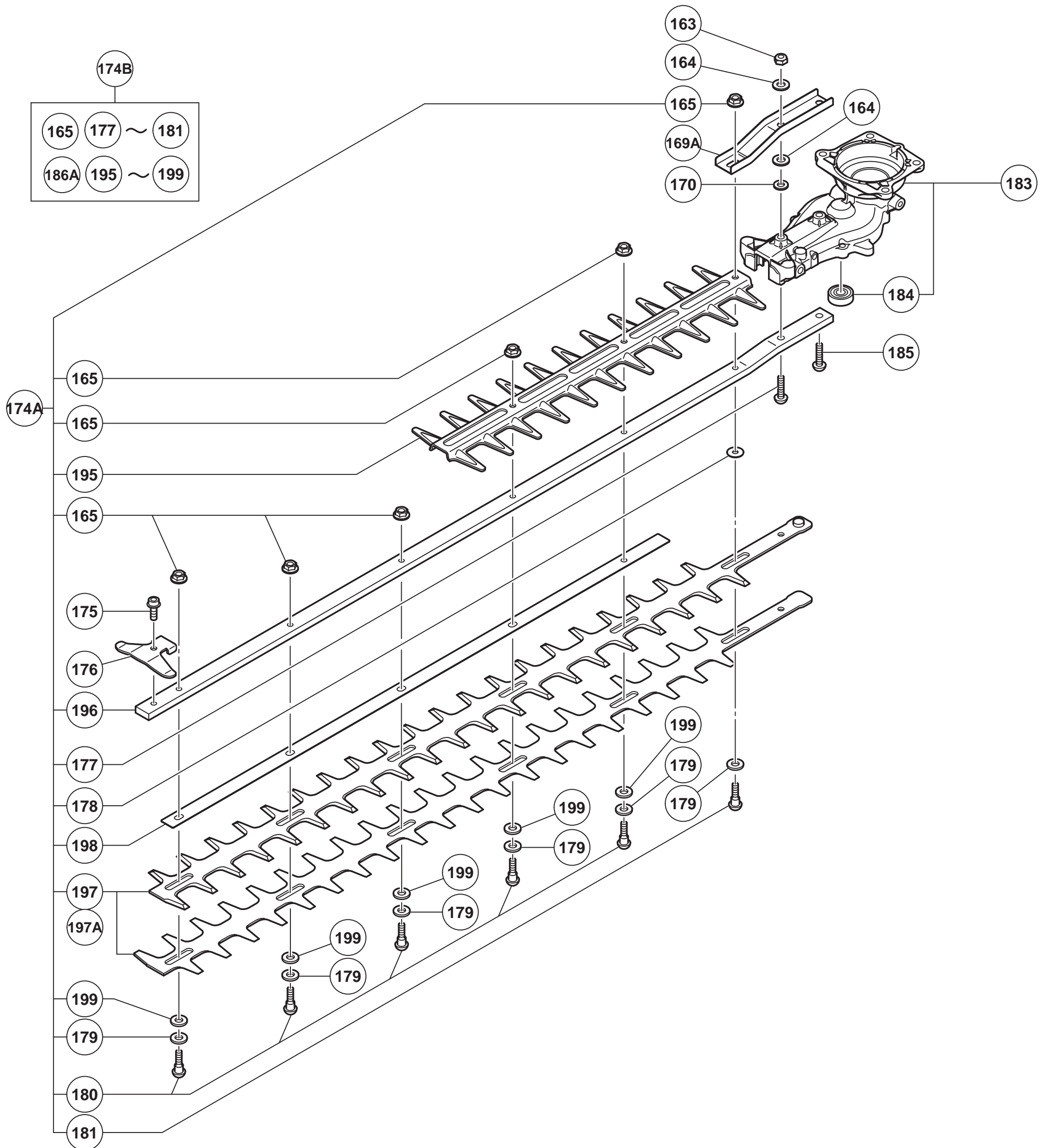
No	Part No	Des	Qty	Details
1	TK-6698730	COVER FIXING BOLT COMP.	1	
2	TK-6698609	CLEANER COVER	1	
3	TK-6690365	CLEANER SPONGE	1	
4	TK-6698608	CHOKE VALVE	1	
5A	TK-312440	MACHINE SCREW (W/WASHERS) M5X65 (BLACK)	2	
6	TK-6698606	CLEANER BODY	1	
7	TK-6698607	CHOKE HANDLE	1	
8	TK-309470	TAPPING SCREW (W/FLANGE) D4X12 (BLACK)	1	
9	TK-6699087	THROTTLE ADJUST SCREW (TAS)	1	TILL 9.2015 FOR EUROPE.(TILL 7.2016 FOR
10	TK-6699088	SET SCREW (B)	3	TILL 9.2015 FOR EUROPE.(TILL 7.2016 FOR
11	TK-6699100	SET SCREW (D)	4	TILL 9.2015 FOR EUROPE.(TILL 7.2016 FOR
12	TK-6699098	SYRINGE	1	TILL 9.2015 FOR EUROPE.(TILL 7.2016 FOR
13	TK-6699097	PRIMER BASE	1	TILL 9.2015 FOR EUROPE.(TILL 7.2016 FOR
14	TK-6699096	PUMP GASKET	1	TILL 9.2015 FOR EUROPE.(TILL 7.2016 FOR
15	TK-6699095	PUMP DIAPHRAGM	1	TILL 9.2015 FOR EUROPE.(TILL 7.2016 FOR
16	TK-6699080	STRAINER	1	TILL 9.2015 FOR EUROPE.(TILL 7.2016 FOR
17	TK-6699103	GUIDE PIN ROLLER	1	TILL 9.2015 FOR EUROPE.(TILL 7.2016 FOR
18	TK-6699099	SYRINGE RETAINER	1	TILL 9.2015 FOR EUROPE.(TILL 7.2016 FOR
19	TK-6699101	SET SCREW (E)	1	TILL 9.2015 FOR EUROPE.(TILL 7.2016 FOR
20	TK-6699104	BALL PLUG RETAINER	1	TILL 9.2015 FOR EUROPE.(TILL 7.2016 FOR
21	TK-6699105	ADJUSTING SCREW (MAIN MIXTURE)	1	TILL 9.2015 FOR EUROPE.(TILL 7.2016 FOR
22	TK-6699083	METERING LEVER SPRING	1	TILL 9.2015 FOR EUROPE.(TILL 7.2016 FOR
23	TK-6699082	PIN	1	TILL 9.2015 FOR EUROPE.(TILL 7.2016 FOR
24	TK-6699091	METERING DIAPHRAGM	1	TILL 9.2015 FOR EUROPE.(TILL 7.2016 FOR
25	TK-6699093	METERING COVER	1	TILL 9.2015 FOR EUROPE.(TILL 7.2016 FOR
26	TK-6699094	SET SCREW (C)	3	TILL 9.2015 FOR EUROPE.(TILL 7.2016 FOR
27	TK-6699089	POST	1	TILL 9.2015 FOR EUROPE.(TILL 7.2016 FOR
28	TK-6699086	ROTOR COVER	1	TILL 9.2015 FOR EUROPE.(TILL 7.2016 FOR
29	TK-6699090	RETAINING RING (E-TYPE) FOR D2.5 SHAFT	1	TILL 9.2015 FOR EUROPE.(TILL 7.2016 FOR
30	TK-6699102	O-RING	1	TILL 9.2015 FOR EUROPE.(TILL 7.2016 FOR
31	TK-6699081	INLET NEEDLE VALVE	1	TILL 9.2015 FOR EUROPE.(TILL 7.2016 FOR
32	TK-6699085	SET SCREW (A)	1	TILL 9.2015 FOR EUROPE.(TILL 7.2016 FOR
33	TK-6699084	METERING LEVER	1	TILL 9.2015 FOR EUROPE.(TILL 7.2016 FOR
34	TK-6699092	METERING GASKET	1	TILL 9.2015 FOR EUROPE.(TILL 7.2016 FOR
36	TK-949567	LOCK NUT M6 (10 PCS.)	1	
37	TK-6698387	CARBURETOR INSULATOR	1	
38A	TK-6600456	INTAKE PAKING (A)	1	
39	TK-6698700	GLASS WASHER	4	
40	TK-6698816	CARBURETOR PACKING	1	
41	TK-6698844	SEAL LOCK HEX. SOCKET BOLT (W/WASHERS)M5	2	
42	TK-6698388	HEX. SOCKET HD. BOLT (W/WASHERS) M4X18	2	
43	TK-6699060	CORD	1	
44	TK-6698879	SEAL LOCK HEX. SOCKET HD. BOLT M4X12	1	
45	TK-6698871	CYLINDER COVER	1	
46	TK-6699180	METAL OF PLUG CAP (60) (B)	1	
47	TK-6698548	PLUG CAP	1	
48	TK-6699175	CORD INSULATION TUBE L60	1	
49A	TK-6600890	IGNITION COIL	1	
50B	TK-6699316	SPARK PLUG ASS'Y BMR7A	1	
51	TK-6698597	CYLINDER	1	
52	TK-6696534	COVER PACKING	2	
53	TK-6696535	INTAKE COVER (A)	1	
54	TK-6696835	SEAL LOCK SCREW M4X10	4	
55	TK-6698617	HEAT PROTECTION PANEL	1	
56	TK-6698631	MUFFLER	1	

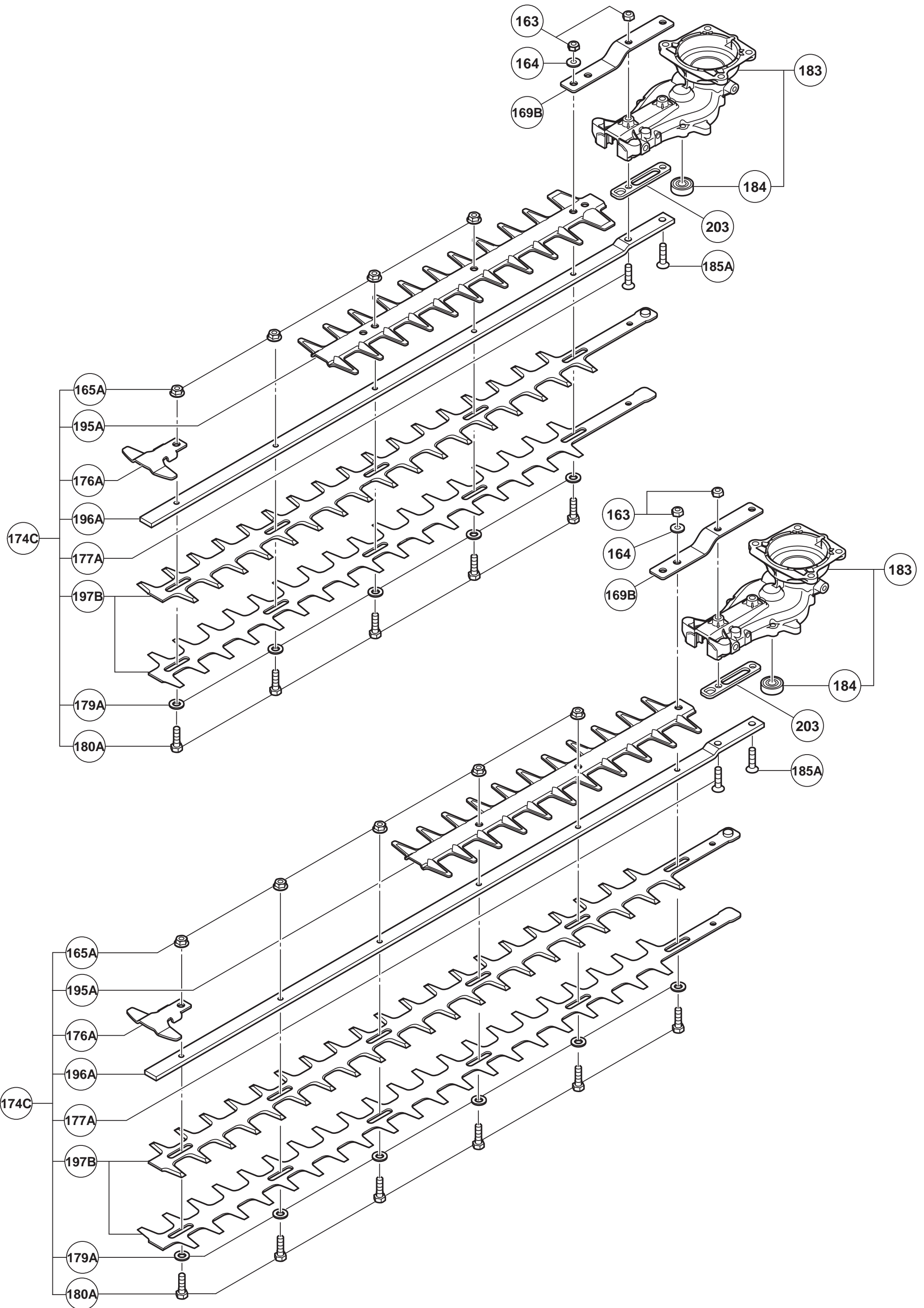
No	Part No	Des	Qty	Details
57	TK-949432	BOLT WASHER M6 (10 PCS.)	2	
58	TK-6696819	HEX. SOCKET HD. BOLT M6X55	2	
59	TK-6696536	INTAKE COVER (B)	1	
60	TK-6696944	PISTON PIN	1	
61	TK-6696531	PISTON	1	
62	TK-6698386	HEX. SOCKET HD. BOLT (W/SP.WASHER) M5X18	8	
63	TK-6696530	CYLINDER PACKING	1	
64	TK-6696532	PISTON RING	1	
65	TK-6684590	CIR CLIP	2	
66	TK-6696879	FLYWHEEL NUT M7	1	
67	TK-6696880	BOLT WASHER D7	1	
68	TK-6698603	STARTER PAWL	2	
69	TK-6685335	STARTER PAWL SPRING	2	
70	TK-6698601	MAGNETO ROTOR	1	
71	TK-6685336	RETAINING RING D4	2	
72	TK-6698872	CRANK CASE (B) ASS'Y	1	INCLUD.73.74
73	TK-6684607	OIL SEAL TB 12227	2	
74	TK-6684608	BALL BEARING 6001 C3	2	
75	TK-6696946	SHIM T0.2	1	
76	TK-6696945	SHIM T0.3	1	
77	TK-6699043	CRANK SHAFT	1	
78	TK-6698729	CRANK CASE (A) ASS'Y	1	INCLUD.73.74.80
79	TK-6696539	CRANK CASE PACKING	1	
80	TK-6696947	KNOCK PIN 4X12	2	
81	TK-6699173	CLUTCH (B)	1	
82	TK-6699040	CLUTCH DRUM	1	
83	TK-6698740	BALL BEARING 6002ZC3	2	
84	TK-939544	RETAINING RING FOR D15 SHAFT (10 PCS.)	1	
85	TK-6688643	GREASE NIPPLE COMP.	1	
86	TK-302089	TAPPING SCREW (W/FLANGE) D5X20 (BLACK)	1	
87	TK-6698876	MUFFLER PROTECTOR	1	
88	TK-887021	SCREW (W/WASHERS) M5X16 (BLACK)	1	
89	TK-6698782	TAIL PIPE	1	
90	TK-6698634	FIXATION PLATE (A)	1	
91A	TK-935196	MACHINE SCREW (W/WASHERS) M4X12 (BLACK)	1	
92	TK-6699073	FIXATION PLATE (B)	2	
93	TK-6695495	HEX. HOLE BOLT 6X18/S	4	
94	TK-	TANAKA LABEL	1	
95	TK-6698878	TAPPING SCREW D4.5X16	1	
96	TK-6685189	PLATE	1	
97	TK-6693227	STARTER HANDLE	1	
98	TK-6693168	ROPE	1	
99	TK-6698988	HEX. SOCKET HD. BOLT (W/BUTTON) M5X20	3	
100A	TK-6684675	RECOIL SPRING	1	
101A	TK-6600995	STARTER PULLEY	1	SINCE 1.2015
102	TK-6685183	DAMPER SPRING	1	
103A	TK-6600996	CAM PLATE	1	SINCE 1.2015
104	TK-6684679	SET SCREW	1	
105	TK-6698622	RECOIL STARTER ASS'Y	1	INCLUD.96-98.100-104
106	TK-6698624	AIR DEFLECTOR	1	
107	TK-6698402	FUEL TANK CAP ASS'Y	1	INCLUD.108
108	TK-6698732	TANK CAP CHAIN	1	
109	TK-6698931	FUEL GROMMET	1	FOR USA.CAN (TILL 9.2016 EXCEPT FOR USA.
110	TK-6698873	FUEL PIPE	1	
111A	TK-6601399	FUEL PIPE	1	

No	Part No	Des	Qty	Details
112A	TK-6697846	RETURN GROMMET	1	FOR USA.CAN (TILL 9.2016 EXCEPT FOR USA.
113	TK-6696949	CLIP	1	
114	TK-6698874	PUMP FILTER	1	
115	TK-6698615	CUSHION RUBBER	4	
*116	TK-6698613	TANK	1	TILL 9.2016 EXCEPT FOR USA.CAN
117	TK-	CAUTION LABEL	1	
119	TK-6600883	SCREW (B)	7	SINCE 10.2015 FOR EUROPE.(SINCE 8.2016
120	TK-6600884	SCREW (C)	4	SINCE 10.2015 FOR EUROPE.(SINCE 8.2016
121	TK-6600889	PRIMER PUMP	1	SINCE 10.2015 FOR EUROPE.(SINCE 8.2016
122	TK-6600876	PUMP BODY	1	SINCE 10.2015 FOR EUROPE.(SINCE 8.2016
123	TK-6600879	PUMP PACKING	1	SINCE 10.2015 FOR EUROPE.(SINCE 8.2016
124	TK-6600880	PUMP DIAPHRAGM	1	SINCE 10.2015 FOR EUROPE.(SINCE 8.2016
125	TK-6684700	INLET SCREEN	1	SINCE 10.2015 FOR EUROPE.(SINCE 8.2016
126	TK-6600877	PUMP COVER	1	SINCE 10.2015 FOR EUROPE.(SINCE 8.2016
127	TK-6600887	HIGH SPEED NEEDLE	1	SINCE 10.2015 FOR EUROPE.(SINCE 8.2016
128	TK-6600885	METERING LEVER SPRING	1	SINCE 10.2015 FOR EUROPE.(SINCE 8.2016
129	TK-6685219	HINGE PIN	1	SINCE 10.2015 FOR EUROPE.(SINCE 8.2016
130	TK-6600881	METERING DIAPHRAGM	1	SINCE 10.2015 FOR EUROPE.(SINCE 8.2016
131	TK-6685222	DIAPHRAGM COVER-METERING	1	SINCE 10.2015 FOR EUROPE.(SINCE 8.2016
132	TK-6684697	SWIVEL	1	SINCE 10.2015 FOR EUROPE.(SINCE 8.2016
133	TK-6600878	THROTTLE VALVE	1	SINCE 10.2015 FOR EUROPE.(SINCE 8.2016
134	TK-6684696	STOP RING	1	SINCE 10.2015 FOR EUROPE.(SINCE 8.2016
135	TK-6600886	WASHER	1	SINCE 10.2015 FOR EUROPE.(SINCE 8.2016
136	TK-6685215	NEEDLE VALVE	1	SINCE 10.2015 FOR EUROPE.(SINCE 8.2016
137	TK-6600882	SCREW (A)	1	SINCE 10.2015 FOR EUROPE.(SINCE 8.2016
138	TK-6600888	METERING LEVER	1	SINCE 10.2015 FOR EUROPE.(SINCE 8.2016
139	TK-6685220	DIAPHRAGM PACKING-METERING	1	SINCE 10.2015 FOR EUROPE.(SINCE 8.2016
140	TK-6600875	CARBURETOR ASS'Y WYGA-1	1	INCLUD.119-139 SINCE 10.2015 FOR EUROPE.
201	TK-6698405	CARBURETOR PACKING	1	
202	TK-6600891	CARBURETOR HEAT PANEL ASS'Y	1	INCLUD.5A.201
203	TK-6600895	SPACER	1	FOR Steel Guide Bar
204	TK-6600997	STARTER PULLEY ASS'Y	1	INCLUD.101A.103A TILL 12.2014
205	TK-6601364	IGNITION COIL ASS'Y	1	INCLUD.46-49A
206	TK-6601361	CARBURETOR ASS'Y WYGA-1 (W/HEAT PANEL)	1	INCLUD.140.202 TILL 9.2015 FOR EUROPE.
207	TK-6601419	TANK	1	SINCE 10.2016 EXCEPT FOR USA.CAN
208	TK-6600358	FUEL GROMMET	1	SINCE 10.2016 EXCEPT FOR USA.CAN

TCH 22ECP2(62) + TCH 22ECP2(78)
2013 - 2016 Alloy guide bar







MODEL
TCH22ECP2(4/4)

No	Part No	Des	Qty	Details
141	TK-6698814	HEX. SOCKET HD. BOLT (W/FLANGE) M6X32	2	
142	TK-6698776	FRONT HANDLE	1	
143		CAUTION LABEL	1	
144	TK-6698777	FRAME	1	
145		NAME PLATE	1	
146	TK-6698778	DAMPER	1	
147	TK-6698880	HANDLE A	1	
148	TK-6698945	FLEXIBLE GROMMET	1	
149	TK-6696348	SPRING (A)	1	
150	TK-6699055	LOCK LEVER	1	
151	TK-6699053	THROTTLE LEVER	1	
152	TK-6696344	TRIGGER LOCKOUT	1	
153	TK-6696345	THROTTLE LEVER SPRING	1	
154A	TK-6601275	STOP SWITCH	1	
155	TK-6699051	HANDLE B	1	
156	TK-305812	TAPPING SCREW (W/FLANGE) D4X16 (BLACK)	4	
157	TK-6698627	THROTTLE WIRE	1	
158	TK-6698738	PROTECTION TUBE	1	
159	TK-6699058	STOP SWITCH CORD	1	
160	TK-6699059	STOP SWITCH CORD (B)	1	
161	TK-6698815	HEX. SOCKET HD. BOLT (W/FLANGE) M6X22	2	
162	TK-6696359	CLIP	1	
163	TK-6698766	NYLON NUT M6	2	FOR Alloy Guide Bar
*163	TK-6698766	NYLON NUT M6	3	FOR Steel Guide Bar
*164	TK-6684639	BOLT WASHER 6	4	FOR 620MM Alloy Guide Bar
*164	TK-6684639	BOLT WASHER 6	2	FOR 780MM Alloy Guide Bar
*164	TK-6684639	BOLT WASHER 6	1	FOR Steel Guide Bar
*165	TK-6699108	U-NUT M5	5	FOR 620MM Alloy Guide Bar
*165	TK-6699108	U-NUT M5	6	FOR 780MM Alloy Guide Bar
*165A	TK-6695170	FLANGE NUT 6	4	FOR 660MM Steel Guide Bar
*165A	TK-6695170	FLANGE NUT 6	5	FOR 780MM Steel Guide Bar
169A	TK-6699064	SUPPORT PLATE	1	FOR Alloy Guide Bar
169B	TK-6600892	SUPPORT PLATE	1	FOR Steel Guide Bar
170	TK-949432	BOLT WASHER M6 (10 PCS.)	2	FOR 620MM
171	TK-6698779	SPRING HOLDER	4	
172	TK-6698781	HEX. SOCKET HD. BOLT (W/FLANGE) M5X10	4	
173A	TK-6600480	ANTIVIBRATION SPRING FOR Alloy Guide Bar	4	REPLACE THE 4 PCS. AT ONCE UNTIL 2.2015
*174A	TK-6600398	BLADE ASS'Y (620MM) FOR Alloy Guide Bar	1	INCLUD.165.177-181.195-200 SINCE 11.2014
*174A	TK-6600410	BLADE ASS'Y (780MM) FOR Alloy Guide Bar	1	INCLUD.165.177-181.195-199 SINCE 11.2014
*174B	TK-6600451	BLADE ASS'Y (620MM) FOR Alloy Guide Bar	1	INCLUD.165.177-181.186A.195-200
*174B	TK-6600453	BLADE ASS'Y (780MM) FOR Alloy Guide Bar	1	INCLUD.165.177-181.186A.195-199
*174C	TK-6600893	CUTTER ASS'Y (660MM)	1	INCLUD.165A.176A.177A.179A.180A.195A.
*174C	TK-6600894	CUTTER ASS'Y (780MM)	1	INCLUD.165A.176A.177A.179A.180A.195A.
175	TK-6699065	HEX. SOCKET HD. BOLT (W/FLANGE) M5X8	1	
176	TK-6699062	GUARD PLATE	1	FOR Alloy Guide Bar
176A	TK-6687275	GUARD PLATE	1	FOR Steel Guide Bar
177	TK-6699113	HEX. SOCKET HD. BOLT (W/BUTTON) M6X25	1	FOR Alloy Guide Bar
177A	TK-6695075	HEX. HOLE FLUSH BOLT 6X25	1	FOR Steel Guide Bar
178	TK-6699114	WASHER (A)	1	
*179	TK-6699111	WASHER M7	5	FOR 620MM Alloy Guide Bar
*179A	TK-6687187	WASHER 7 BLACK	5	FOR 660MM Steel Guide Bar
*179A	TK-6687187	WASHER 7 BLACK	6	FOR 780MM Steel Guide Bar
*180	TK-6699109	SHOULDER BUTTON BOLT M5X25	4	FOR Alloy Guide Bar
*180A	TK-6687158	FIXING BOLT A M6	5	FOR Steel Guide Bar
181	TK-6699179	SHOULDER BUTTON BOLT M5X31	1	

No	Part No	Des	Qty	Details
*182	TK-6698948	BLADE CASE (FOR 620MM)	1	
*182	TK-6698785	BLADE CASE (FOR 780MM)	1	
183	TK-6699074	GEAR CASE (A) ASS'Y	1	INCLUD.184
184	TK-6698772	BALL BEARING 608ZZC3	2	
185	TK-6699113	HEX. SOCKET HD. BOLT (W/BUTTON) M6X25	1	FOR Alloy Guide Bar
185A	TK-6695075	HEX. HOLE FLUSH BOLT 6X25	1	FOR Steel Guide Bar
186A	TK-6600418	GUIDE PLATE (B)	2	
187	TK-6698987	CAM ROD	2	
188	TK-6699066	GEAR 2	1	
189	TK-6699068	FELT PACKING (B)	2	
190	TK-6699067	FELT PACKING (C)	1	
191	TK-6699042	GEAR CASE PACKING	1	
192	TK-6699071	GEAR CASE (B) ASS'Y	1	INCLUD.184
193	TK-6699069	HEX. SOCKET HD. BOLT (W/SP.WASHER) M5X14	6	
194	TK-	START LABEL (B)	1	
195	TK-6600013	LOWER PLATE	1	FOR Alloy Guide Bar
*195A	TK-6601209	PROTECTION PLATE	1	FOR 660MM Steel Guide Bar
*195A	TK-6601210	PROTECTION PLATE	1	FOR 780MM Steel Guide Bar
*196	TK-6600012	BLADE GUIDE (620MM)	1	FOR Alloy Guide Bar
*196	TK-6600015	BLADE GUIDE (780MM)	1	FOR Alloy Guide Bar
*196A	TK-6687147	CUTTER GUIDE 734L M6	1	FOR 660MM Steel Guide Bar
*196A	TK-6687144	CUTTER GUIDE 845L M6	1	FOR 780MM Steel Guide Bar
*197	TK-6600014	HEDGE TRIMMER BLADE (C) 620MM	2	SINCE 11.2014 FOR Alloy Guide Bar
*197	TK-6600016	HEDGE TRIMMER BLADE (D) 780MM	2	SINCE 11.2014 FOR Alloy Guide Bar
*197B	TK-6687086	CUTTER A (696.5L)	2	FOR 660MM Steel Guide Bar
*197B	TK-6687092	CUTTER A (812L)	2	FOR 780MM Steel Guide Bar
*198	TK-6600360	BLADE LINER	1	
*198	TK-6600361	BLADE LINER	1	FOR 780MM
*199	TK-6699112	WASHER (B)	4	
*199	TK-6699112	WASHER (B)	5	FOR 780MM
200	TK-6600362	BALANCER	1	FOR 620MM
		STANDARD ACCESSORIES		
501	TK-6698756	BOX WRENCH 10/19MM	1	
		OPTIONAL ACCESSORIES		
601	TK-6600487	BOTTOM COVER SET	1	INCLUD.141.161.602.603.605-607
602	TK-6600481	BOTTOM COVER (C) ASS'Y	1	INCLUD.604
603	TK-6600482	SEALING SPONGE (A)	1	
604	TK-6600483	SEALING SPONGE (E)	1	
605	TK-6600484	SEALING SPONGE (F)	1	
606	TK-6600485	SEALING SPONGE (G)	1	
607	TK-6600486	HEAT PROTECTION PANEL (B)	1	